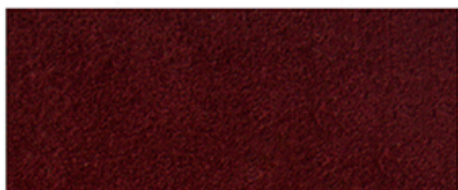


INTERIOR

ALCANTARA®

A754 PALISSANDRO



A483 GRAYSH



A907 CHIANTI



A195 BLOOM



A881 POMPEIAN RED



A225 CAMEO BROWN



A396 GOYA



A484 PALM



A335 AMARETTO



A480 TAUPE



A431 ORANGE



A781 BROWN



A425 CADMIUM



A401 PRALINE



A477 DARK CAMEL



A490 TERRA



A116 CURRY



A351 CAMEL



A134 ANDY



A160 SADDLE



A648 INFANTA



A653 COMMODORE



A791 NAVY



A604 CHIC



A478 PEARL



A769 AUBERGINE



A661 VIOLET



A792 BRITTANY



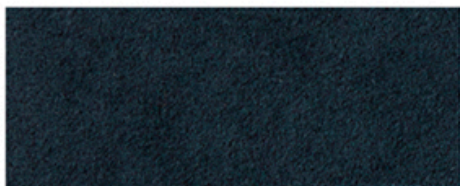
A681 NILE



A347 VELVET



A646 SEA



A640 POWDER



A786 BOHEMIAN



A475 PORCELAIN



A349 BABY GRAY



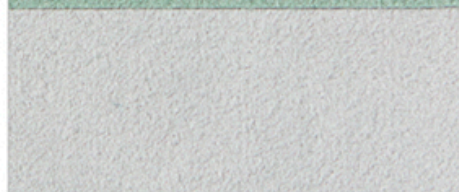
A219 AUBUSSON



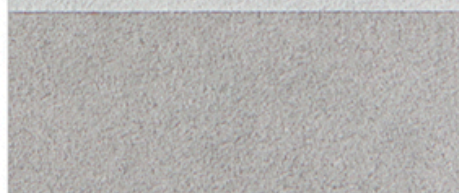
A256 CELADON



A140 STONE



A236 LUNARGLIDE



A381 WHALE



A510 STEEL



A749 CHESTNUT



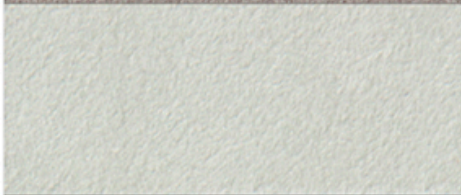
A341 SILVER



A729 MUSCATTE



A142 ICE



A965 MONKFISH



A261 ALMOND



A514 NOCE



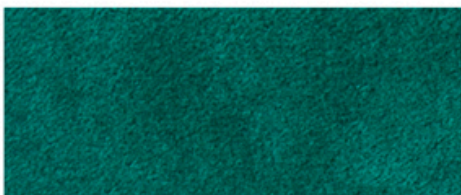
A570 LIZARD



A153 GOLD



A429 EMERALD



A990 NOTTE



A645 LICHEN



A991 SLATE



A651 TREKKING



A642 ANTHRACITE



A647 KIWI



A710 ULTRA UMBER

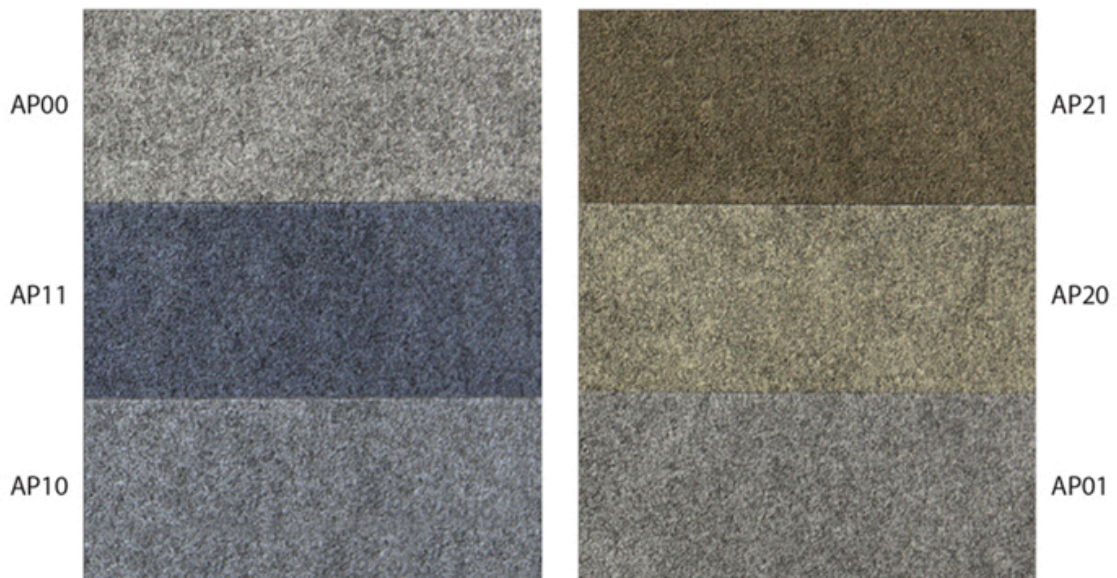


A771 MALACHITE



A752 DARKNESS






ALCANTARA® SHAPE

Alcantara® Shape

APPLICATIONS Interior Upholstery

MAIN CHARACTERISTICS			
COMPOSITION	ALCANTARA®	POLYESTER POLYURETHANE	71 ± 3 % 29 ± 3 %
THICKNESS			1.10 ± 0.15 mm
UNIT WEIGHT		EN 29073-1	350 ± 40 g/m2
WIDTH			≥ 142 cm
DIMENSIONAL STABILITY	Water 40°C	EN 25077 + EN ISO 6330	≤ 3 %
BREAKING LOAD	LENGTHWISE CROSSWISE	EN ISO 13934-1	≥ 400 N ≥ 400 N
ELONGATION AT 50N	LENGTHWISE CROSSWISE	EN ISO 13934-1	≥ 2 % ≥ 6 %
TEAR STRENGTH		EN ISO 13937-3	≥ 30 N
MARTINDALE ABRASION 12 kPa	END POINT	EN ISO 12947-4 EN ISO 12947-2	(*) ≥ 20000 cycles ≥ 100000 cycles
COHESION Alcantara Backing		EN ISO 2411	≥ 10 N
SLIPPAGE RESISTANCE OF YARNS AT SEAM	LENGTHWISE CROSSWISE	EN ISO 13936-2	≤ 6 mm
RESISTANCE TO PILLING	2000 cycles	EN ISO 12945-2	≥ 4/5
COLOR FASTNESS (**)			
TO LIGHT	Xenotest Beta	EN ISO 105 B02	≥ 5 blue scale (1-8)
TO DOMESTIC WASHING	Tone change Staining	EN ISO 105 C06	≥ 4 grey scale (1-5) ≥ 3 grey scale (1-5)
TO DRY CLEANING	Tone change Staining	AATCC 132	≥ 4 grey scale (1-5) ≥ 3 grey scale (1-5)
TO RUBBING	Dry Wet	EN ISO 105 X12	≥ 4 grey scale (1-5) ≥ 3 grey scale (1-5)
TO WATER	Tone change Staining	EN ISO 105 E01	≥ 4 grey scale (1-5) ≥ 3.5 grey scale (1-5)
GENERAL WASHING			

(*) Slight change in the appearance of product surface.

(**) Slight shade variations from one production batch to another one are possible on these products.

NOTE: Tra i bagni di tintura, sono possibili leggere variazioni di tono dovute al processo di lavorazione.

Nel caso di inserti o manufatti realizzati con più materiali, verificare sempre la compatibilità dei diversi materiali.

NOTE: Slight shade variations from one production batch to another one are possible on these products.

In case of items manufactured using different materials, always verify the compatibility of the same.

